



HP Ergosoft RIP Color Edition
HP Ergosoft Pro RIP Color Edition
Installation Guide



Contents

Introduction	2
About the Installer	2
1. Installation Procedure	3
2.1 Configuration for HP Stitch S300 and HP Stich S500	6
Configuring a Print Environment with Add	6
Configuring Print Environment with <i>Import & Download</i>	7
2.2 Configuration for HP Stitch S1000	10
Summary	10
Step 1 – Printer Port Configuration	11
Step 2 – Printer Configuration Options	12
Step 2.1 – Set destination Folder	12
Step 2.2 – Set IP Address	15
Step 2.3 – JMF connection URL	15
Step 3 – Computer Network configuration	16
Step 3.1 – Set Computer IP address	16
Step 3.2 – Set Port number	16
Step 4 – Finishing Printer Port Setup	16
Step 5 – Finishing PrintClient Setup	17
Step 6 – Finishing Print Environment Setup	17
Step 7 – Print Environment Device Options	18
Errors and warnings	19
3. First Print	20



Introduction

This Installation Guide covers the installation and the setup for the HP Ergosoft RIP Color Edition for the complete Stitch Series (S300/S500/S1000).

It is valid for both HP Ergosoft RIP Color Edition and HP Ergosoft Pro RIP Color Edition.

About the Installer

With the 15.5. Installer or newer, the HP Ergosoft RIP Color Edition supports the complete Stitch Series. It can be used regardless of which Stitch Printer you are using. The available Printers are defined by the used licenses.

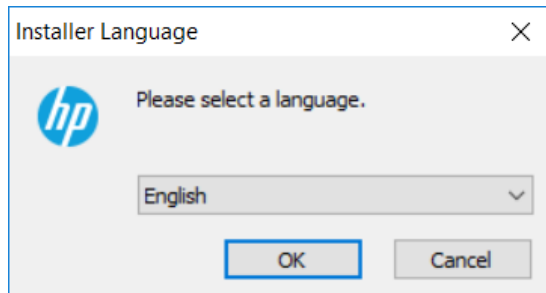
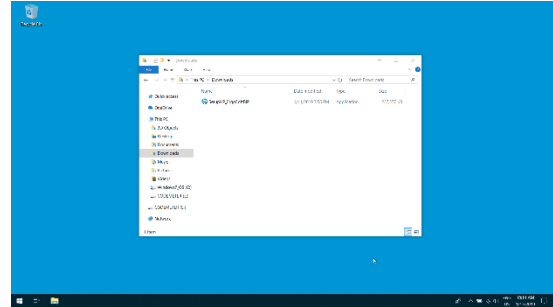


1. Installation Procedure

To begin with the Installation, navigate to the folder you downloaded the HP Ergosoft RIP Color Edition to. Many browsers will default to downloading files to «Downloads» under Windows, but it might be somewhere else if you chose a custom save location.

Double-click on the setup file and wait for the installer to prepare the installation.

On modern Windows systems, you might need to confirm a firewall message to allow access for the installer.

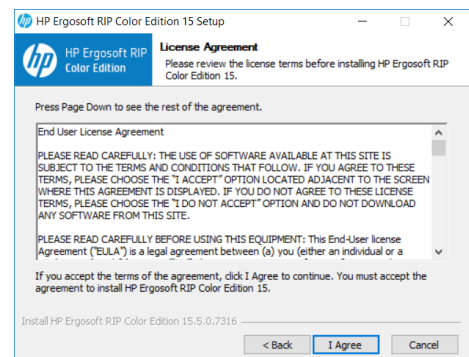
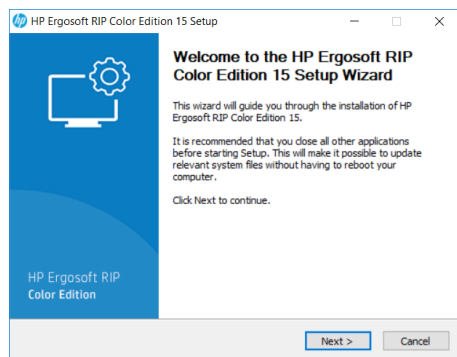


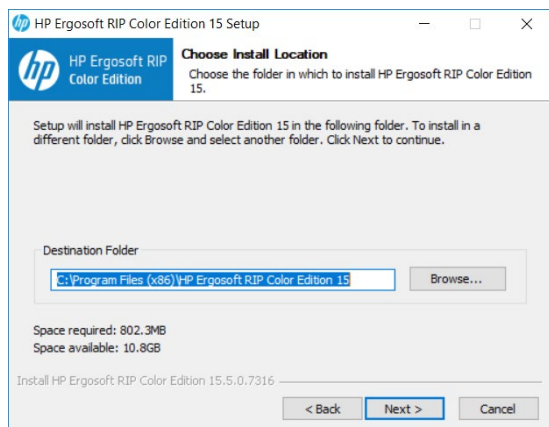
Select the user interface language for the software. The installation and user interface of the RIP will then be displayed in this language.

This setting can easily be changed after the installation should you wish to use the software in a different language later on.

After a moment, the welcome screen will appear. Simply click next to proceed with the installation.

Read and confirm the Software License Agreement using the *I Agree* button. If you do not wish to accept the software license agreement, click Cancel to quit the installation.



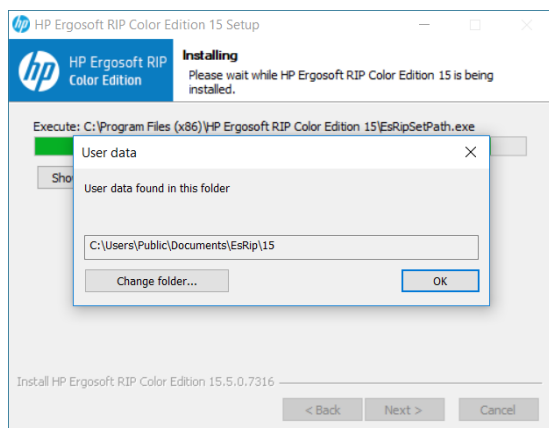
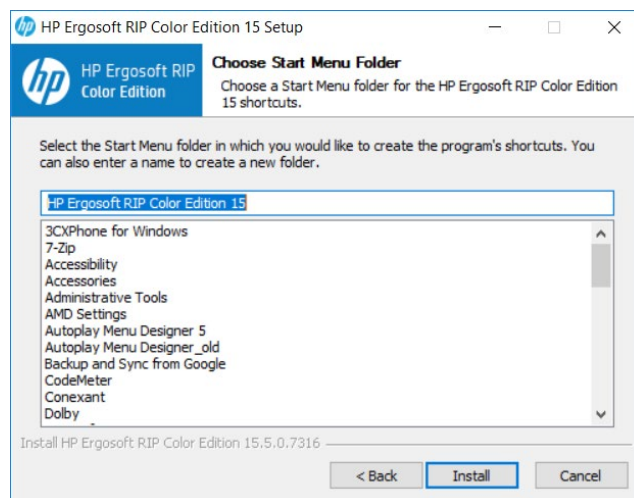


Select the installation directory for the main HP Ergosoft RIP Color Edition program. This is where the software itself will be installed to.

By default the suggested path will be in the Windows program directory but you may install the program to a custom location. To do so, click *Browse* and select the folder you wish to install the software to.

Select the *Start Menu Folder*, this is the folder the RIP will appear in when you access the Windows *Start* button.

When you are satisfied with your choice, click *Install* and wait for the installer to finish copying files.



Towards the end of the installation, a prompt will appear, asking you to select a *User Data* folder. This is the folder where your user specific data such as software configuration, profiles, etc. will be stored.

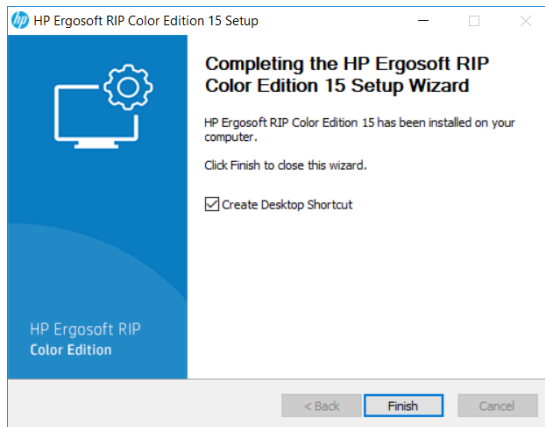
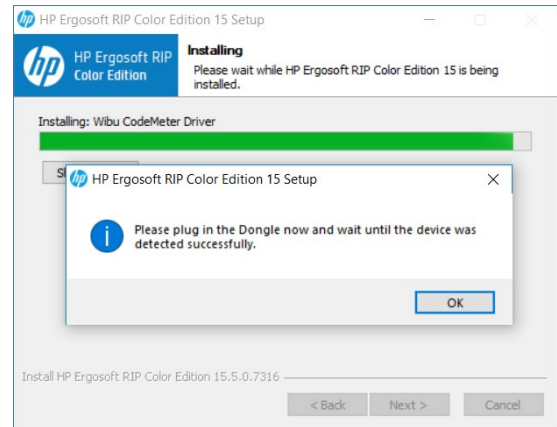
Generally we recommend using the default path to ensure Windows gives the program full access to the folder, but you may of course select a custom path by clicking the *Change Folder...* button.

When you are satisfied, confirm with *Ok* to continue.



After a moment, another prompt will appear asking to plug in the dongle.

Make sure the silver USB Dongle you received with your HP Ergosoft RIP Color Edition is currently plugged into the system, then confirm with *Ok*.



Wait for the file copy process to finish, then press *Next*. Another dialog will appear with a checkbox that lets you set if a shortcut to the HP Ergosoft RIP Color Edition should be created.

Click *Finish* to complete the installation.

Congratulations! You have successfully installed the HP Ergosoft RIP Color Edition!



2.1 Configuration for HP Stitch S300 and HP Stich S500

When first starting the HP Ergosoft RIP Color Edition, you will be prompted to do some initial configurations.

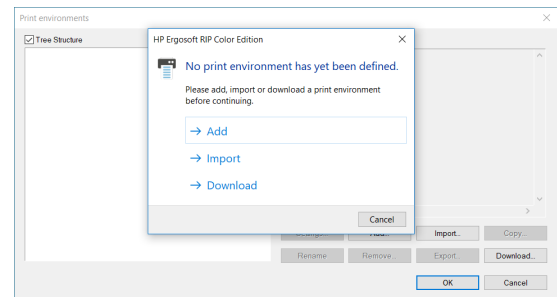
Start the software by double-clicking the Desktop Shortcut. After a moment, the Print Environment dialog will appear with a prompt stating that «No Print Environment has been defined».

You have 3 options to add a new Print Environment:


Add: Lets you select your printer model and create a new, empty Print Environment without density linearisation or profile.

Import: Lets you import an existing Print Environment from a .PrEnv or PrEnvPck file.

Download: Connects to the HP Ergosoft RIP Servers and allows you to download from a selection of pre-configured Print Environments containing Density Linearization and Profile.



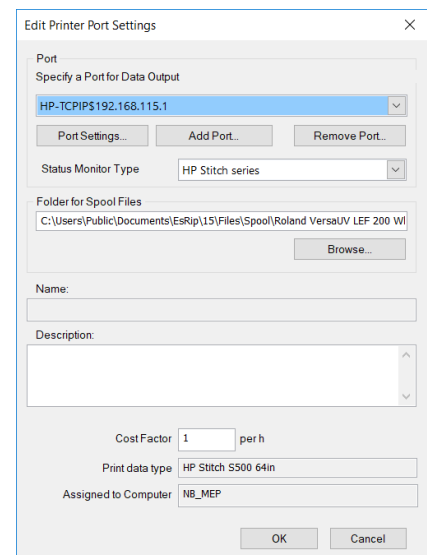
Configuring a Print Environment with Add

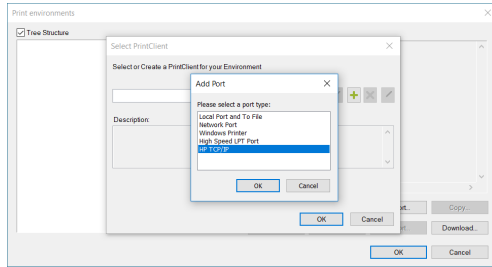
If you selected Add, the software will automatically start the PrintClient configuration for you. In the *Select PrintClient* Window, click the  Icon to add a new PrintClient and configure your port. The HP Ergosoft RIP Color Edition will then display a list of the available printers. Select your model.

The next dialog sets up the PrintClient, a waiting queue to manage print jobs.

By default, the folder for temporary spool files will be created in the *User Data* folder, but you may of course customize the folder, though it is recommended to make sure there is enough harddisk space available at the selected location for the spool files, as they may reach several GB for large print jobs.

Since at this point we don't have any predefined port to select for the PrintClient, click *Add Port*.





In *Add Port*, select the port type HP TCP/IP and confirm with **Ok** to continue with the port configuration.

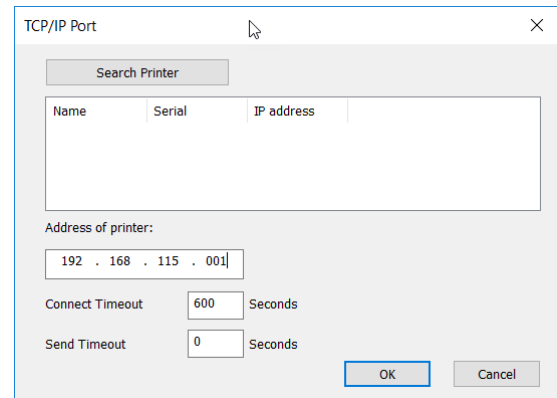
There are now two options to add the port. You may either:

Click on *Search Printer* to auto-detect the printer in the network, then select the appropriate one from the list.

Or

Enter the IP address into the respective field at the bottom.

Connect and Send timeout can be left at their default values in most cases.



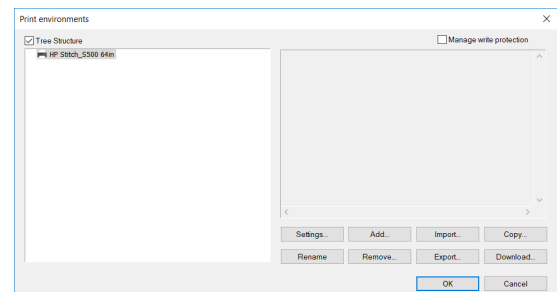
When you are done, click *Ok* to confirm and get back to the PrintClient configuration window. In *Port*, you'll find the printer port we just created already preselected.

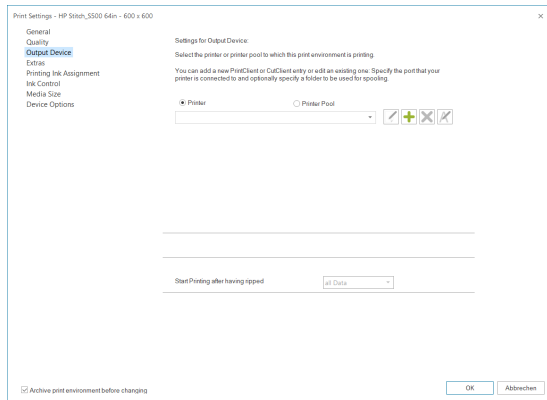
Confirm with **Ok** and specify a name for your PrintClient, confirm the selection, and finally enter a name for your newly created Print Environment to complete the initial configuration.


Configuring Print Environment with *Import & Download*

After you have imported or downloaded your initial Print Environment through the respective button, we will need to configure the printer port so we can send data to the printer.

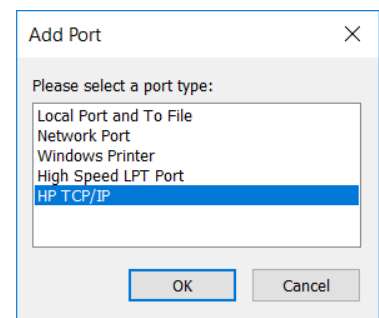
To do this, select the Print Environment you added in the *Print Environments* dialog and click the *Settings* button.



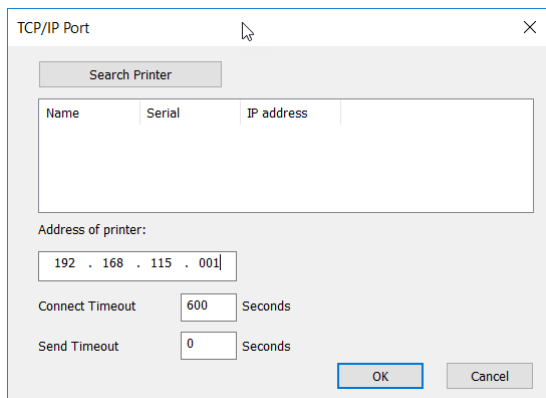


Navigate to *Output Device*. As we have not yet defined a port, the dropdown list of PrintClients will be empty. Click on the  icon to add a PrintClient and define the printer port.

In *Add Port*, select the port type HP TCP/IP and confirm with *Ok* to continue with the port configuration.



There are now two options to add the port. You may either:



Click on *Search Printer* to auto-detect the printer in the network, then select the appropriate one from the list.

Or

Enter the IP address into the respective field at the bottom.

Connect and Send timeout can be left at their default values in most cases.

When you are done, click *Ok* to continue.



The next dialog sets up the PrintClient, a waiting queue to manage print jobs.

By default, the folder for temporary spool files will be created in the User Data folder, but you may of course customize the folder, though it is recommended to make sure there is enough harddisk space available at the selected location for the spool files, as they may reach several GB for large print jobs.

When you are happy with the configuration, confirm with *Ok*. Then confirm the Print Environment settings dialog with *Ok*.

This completes the Print Environment and port setup and brings you to the main RIP interface, called the JobComposer.

At first launch, the JobComposer will show the *Awareness Screen*, highlighting the HP Color Tools features. When you are ready, close the dialog by confirming with *Ok*.

2.2 Configuration for HP Stitch S1000

Summary

When first starting the HP Ergosoft Pro RIP Color Edition, you will be prompted to do some initial configurations.

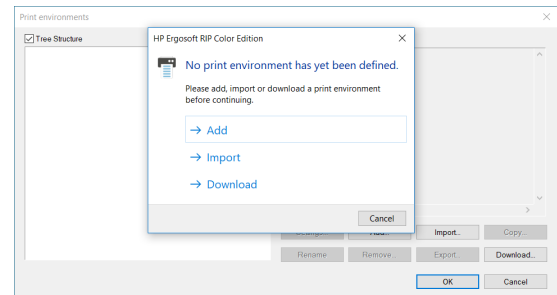
Start the software by double-clicking the Desktop Shortcut. After a moment, the Print Environment dialog will appear with a prompt stating that «No Print Environment has been defined».

You have 3 options to add a new Print Environment:


Add: Lets you select your printer model and create a new, empty Print Environment without density linearisation or profile.


Import: Lets you import an existing Print Environment from a *.PrEnv or *.PrEnvPck file.

Download: Connects to the HP Ergosoft RIP Servers and allows you to download from a selection of pre-configured Print Environments containing Density Linearization and Profile.



The following steps described the configuration of the PrintClient for a HP Stitch S1000 and are the same for all three choices.

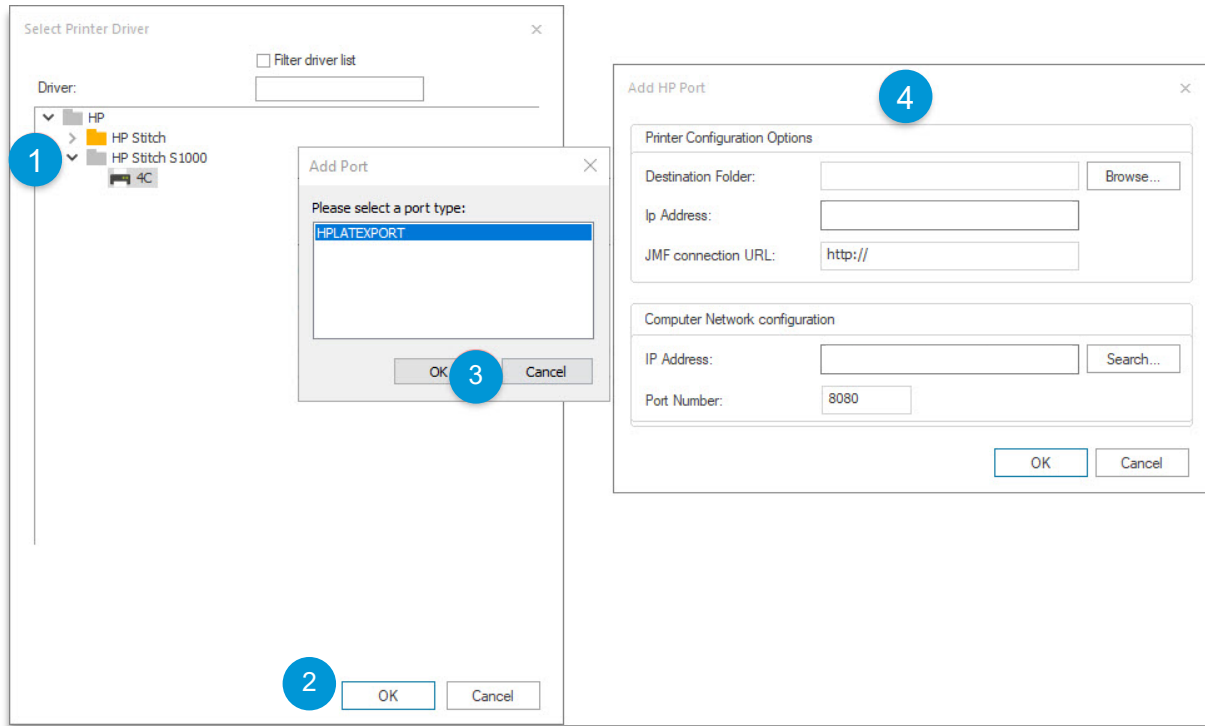
If you selected Add, the software will automatically start the PrintClient configuration for you. In the *Select PrintClient* Window, click the  Icon to add a new PrintClient and configure your port. The HP Ergosoft Pro RIP Color Edition will then display a list of the available printers. Select your model and define the printer port as described in the following steps.

For imported or downloaded Print Environments simply open the Print Environment and navigate to *Output Device*. As we have not yet defined a port, the dropdown list of PrintClients will be empty. Click on the  Icon to add a PrintClient and define the printer port as described in the following steps.



Step 1 – Printer Port Configuration

1. Select the Printer Driver.
2. Click “OK” in port type selection window.
3. Printer Port Configuration Window will pop up.



To ensure a smooth process it is suggested to test the selected IP via a network ping before continuing the setup.

Step 2 – Printer Configuration Options

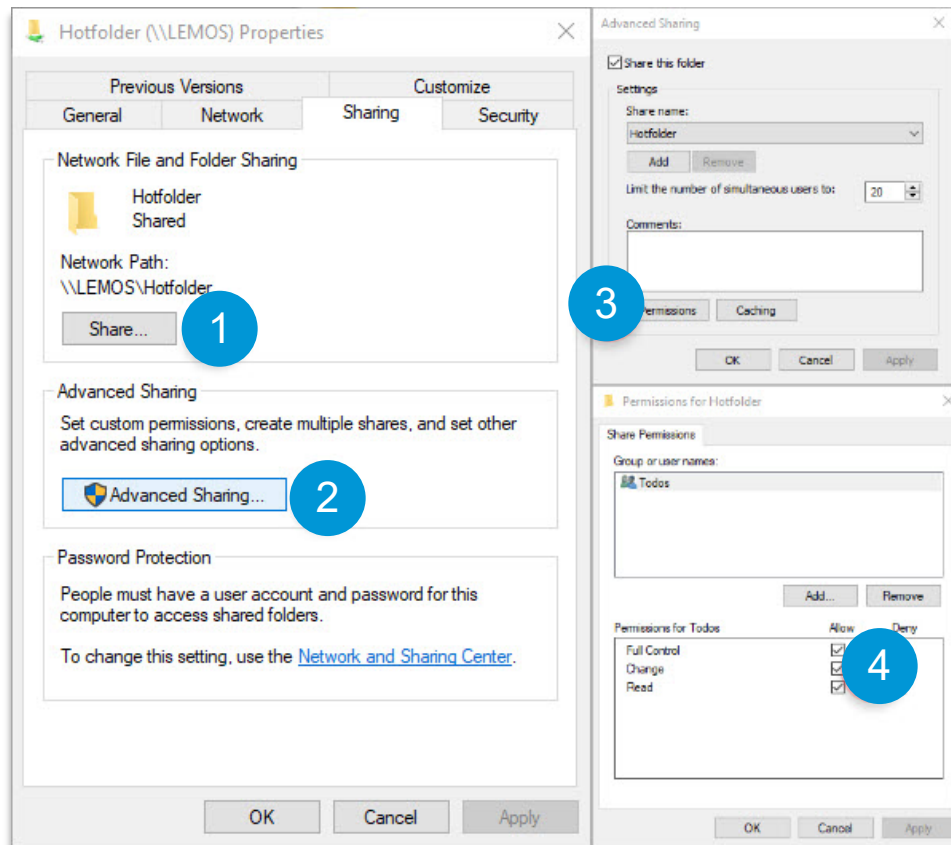
For more details about how to configure the following settings, please also refer to the HP User Guide for HP Stitch S1000.

Step 2.1 – Set destination Folder

Note: Destination folder is configured under Printer user interface software preferences.

Use the path defined has a Hotfolder in the HP internal Print server.

The destination folder needs to be configured with full control permission sharing.

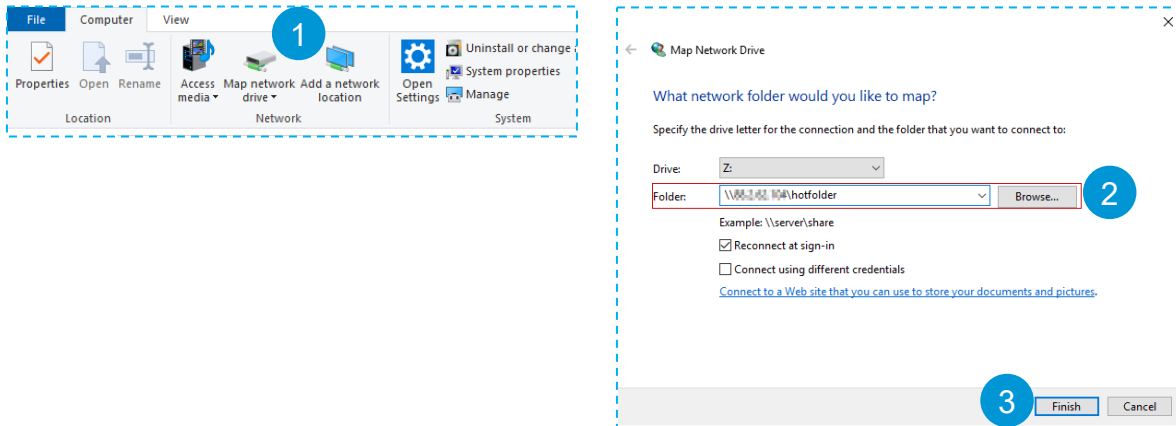


Step 2.1 - Option 1 – Use a mapped network drive

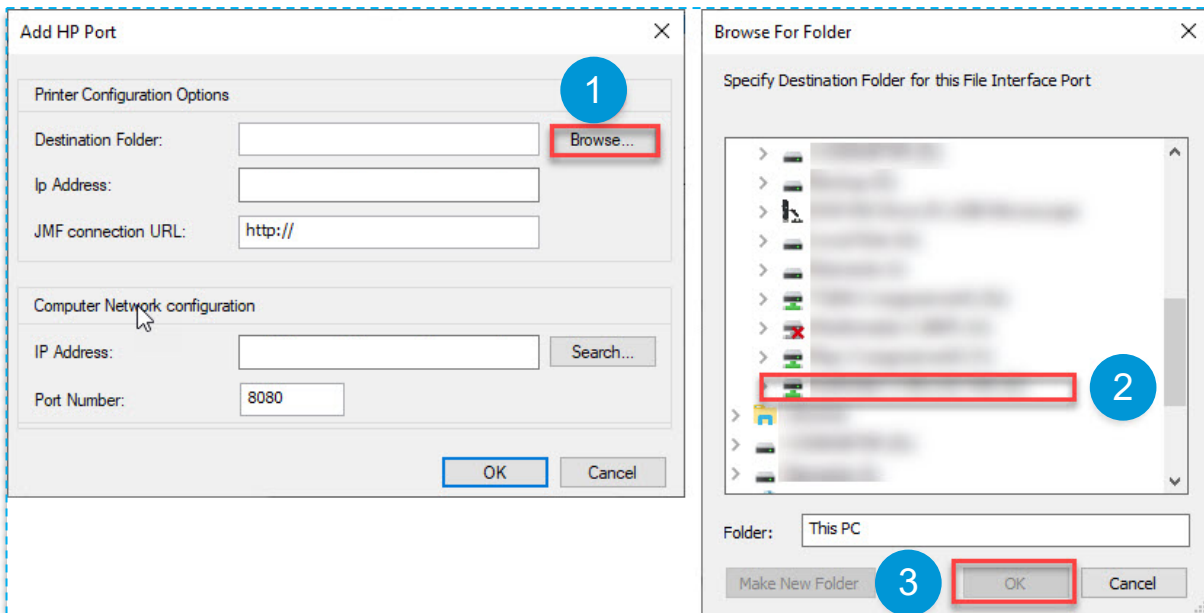
How to configure a network drive?

Open Windows Explorer > Select “My Computer”

1. Click on “Map Network Drive”.
2. Select the folder
3. Click finish.



1. Browse to your destination folder.
2. Select your created network drive
3. Click “OK” in “browse for folder” window

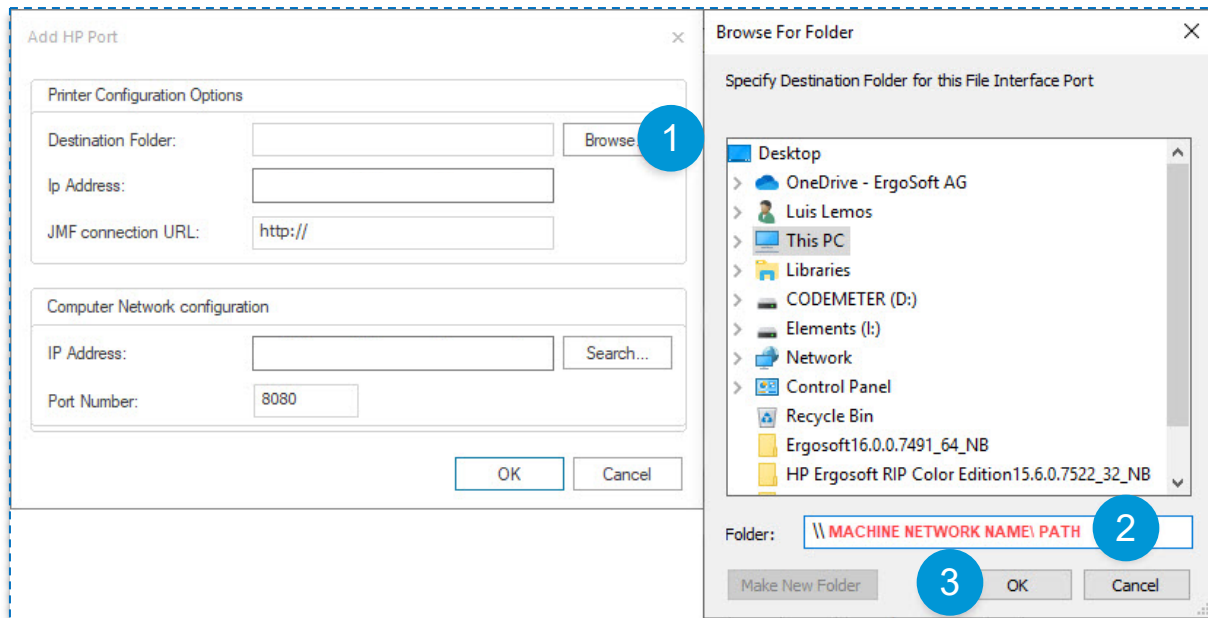




Step 2.1 - Option 2 – Select a UNC path with name resolving

1. **Browse to your destination folder.**
2. **Write the path to the destination folder using the following scheme**
[\\”machine network name”\path.](#)
3. **Click “OK” in “browse for folder” window**

Note: By clicking “browse” instead of writing the path name in “port menu”, the path will be validated in explorer window.





Step 2.1 - Option 3 – Select a UNC path with an IP address

1. Browse to your destination folder.
2. Write the path to the destination folder using the following scheme [\\\(Ip address\)xxx.xxx.xxx.xxx\path](#).
3. Click “OK” in “browse for folder” window

Note: By clicking “browse” instead of writing the path name in “port menu”, the path will be validated in explorer window.

Step 2.2 – Set IP Address

Under IP Address write the correct Printer IP.

The screenshot shows the 'Add HP Port' dialog box. It has two main sections: 'Printer Configuration Options' and 'Computer Network configuration'. In the 'Printer Configuration Options' section, there are three fields: 'Destination Folder' (Z:\), 'IP Address' (empty, highlighted with a red rectangle), and 'JMF connection URL' (http://88.2.62.104:8080/jmfservice). There is a 'Browse...' button next to the 'Destination Folder' field. In the 'Computer Network configuration' section, there are two fields: 'IP Address' (empty) and 'Port Number' (8080), with a 'Search...' button next to the 'IP Address' field. At the bottom of the dialog are 'OK' and 'Cancel' buttons.

Step 2.3 – JMF connection URL

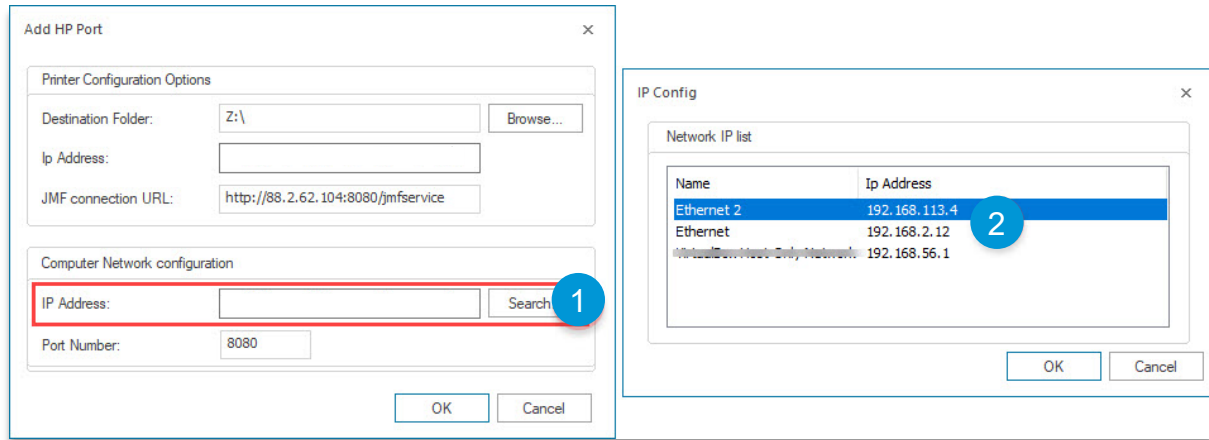
This field is auto-filled using the Printer’s IP address for first time and it must have the same ip address. However, this path is configured under printer user interface software preferences and it must be the exactly the same.



Step 3 – Computer Network configuration

Step 3.1 – Set Computer IP address

Setup your IP address or select your correct IP from your Network IP list.



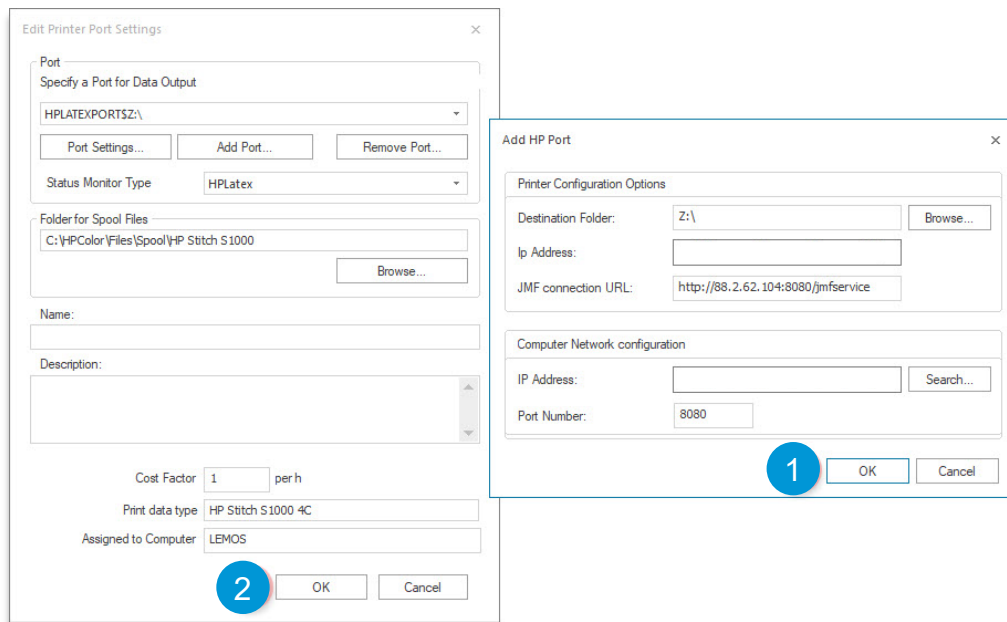
Note: Your computer needs to be on the same sub-net mask as your printer.

Step 3.2 – Set Port number

By default, the port number is 8080. It is not advisable that you make changes to the port

Step 4 – Finishing Printer Port Setup

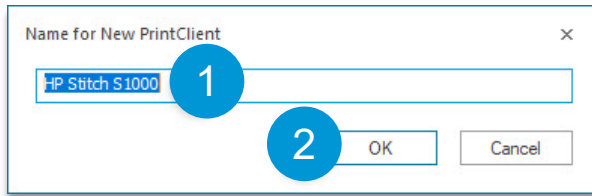
1. Click "OK" in "Add HP Port" window
2. Click "OK" in "Edit Printer Port Settings"





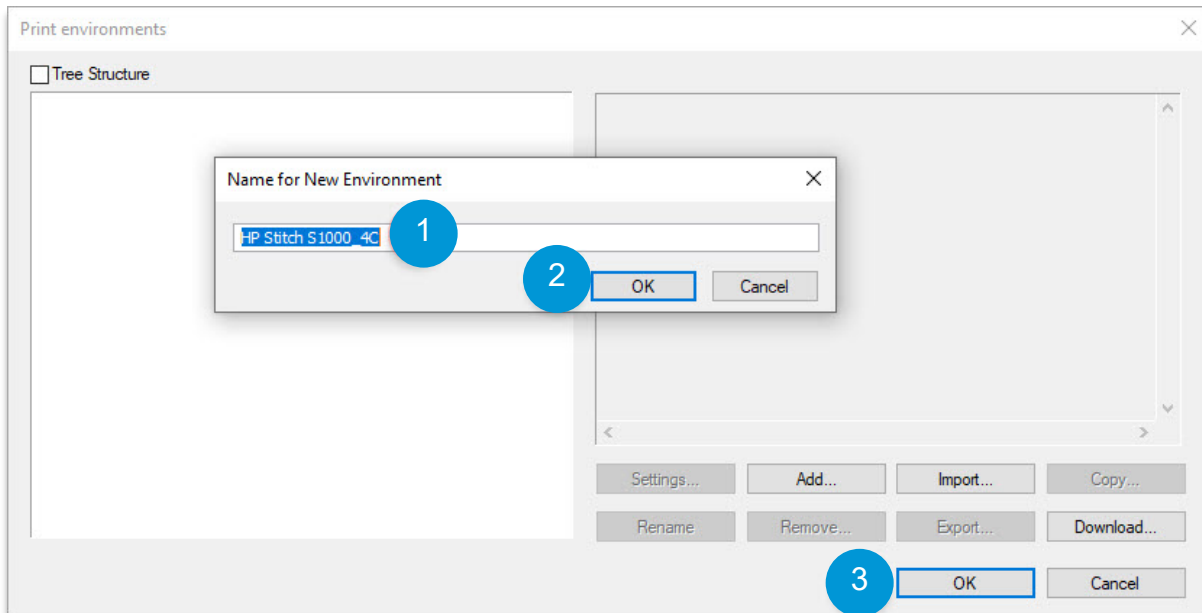
Step 5 – Finishing PrintClient Setup

1. Set the name for your PrintClient.
2. Click “OK” in “Name for New PrintClient” window



Step 6 – Finishing Print Environment Setup

1. Type the Name for the New Print Environment
2. Click “OK” in the “Name for New Environment”
3. Click “OK” to close the Print Environments Dialog





Step 7 – Print Environment Device Options

If you correctly configured your Print Environment Output Device (that includes all the previous steps), you should be able to select the device options without any error.

1. **Update** - will allow you to retrieve updated information about Media and Print modes.
2. **Media** – You can select Media source (which roll the printer will use to print); Category of media depending on type of printing used; Media name is the media description.
3. **Print Modes** – Allows you to select the Print Mode and the resolution of ripped data named as “input resolution”.
4. **Profile options** – Get ICC profile will “grab” the ICC profile currently set on the Printer.
5. **Check media before sending the Job** – this option will verify if the selected Media name and Category is in the Printer.
6. **Use HP Professional PANTONE Emulation** – For more information please visit <http://www8.hp.com/h20195/v2/GetPDF.aspx/4AA7-3031ENW.pdf>.
7. **Create Job Subdirectory** – For each Job you Print, it will be created a specific subdirectory.

Print Settings - HP Stitch S1000_4C - 150 x 150

General
Quality
Output Device
Extras
Printing Ink Assignment
Ink Control
Media Size
Device Options

Retrieve Printer Settings

If you want to retrieve new printer settings press update: Update 1

2 Media

Media Source: Roll-2
Category: Direct to Fabric
Media name: Generic Bleed Through Textile

3 Print modes

Mode: 4p 100%
Print Resolution: 600x1200 dpi
Input Resolution: 150 x 150

Profile options

4 Get ICC profile Set ICC Profile

5 ☒ Check media before sending Job

6 ☒ Use HP Professional PANTONE Emulation

7 ☐ Create Job Subdirectory

☒ Archive print environment before changing

OK Cancel

Errors and warnings

“Printer not reachable”

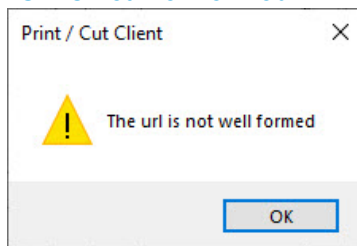


This warning message is shown if the Printer address is not reachable. This is normally shown when you open Print Environment Settings or try to access Print Environment settings > Device options.

Please verify:

- **Printer’s IP address in PrintClient HP Port configurations**
- **Printer and computer Network configuration**

“Url is not well formed”

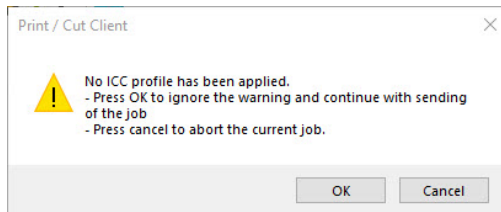


This warning message is shown if JMF connection URL, in HP port settings is incorrectly set.

Please verify:

- **Printer’s JMF connection URL in PrintClient HP Port configurations**


“No ICC profile has been applied”

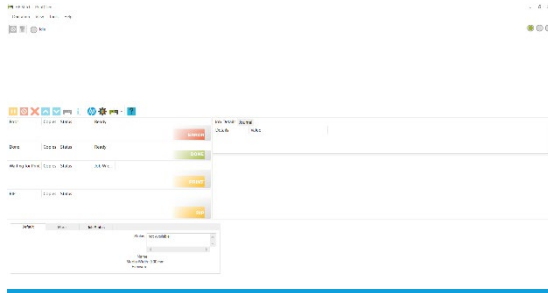


This message is shown if your Print Environment does not have an embedded profile. This warning message is shown before the PrintClient sends the Job to the Printer. The user can ignore the message by clicking “OK” or “Cancel” the Printing process.



3. First Print


To print your first job, first open the PrintClient we configured earlier by clicking on the PrintClient Icon in the toolbar. Note that clicking the PrintClient icon  will always open the PrintClient set in the currently selected Print Environment.



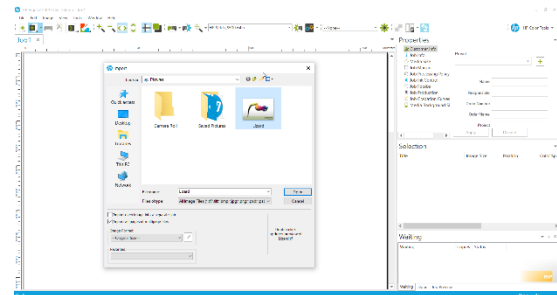
When the PrintClient opens, set it to Online by clicking on the first of the 3 dots at the top right so it turns green.

When set to Online, the PrintClient will automatically send all data to the printer as soon as it is ready.

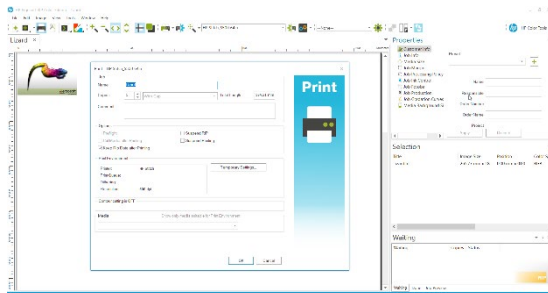
When set to Offline, it will not send any data to the printer, but instead prepare the raster data and place it in the waiting queue until the PrintClient is set to Online.


Go back to the JobComposer and import an image file by clicking the Import button .

Then navigate to your image file, select it and click Open.



Once the image is imported, you can make further adjustments to it in the properties bar to the right like scaling, rotating etc.



When you are satisfied, make sure the printer is ready, then click the *Print* Icon . Double check the copies and settings in the Print Dialog, then confirm with Ok to send your job to the printer.

You can now follow the progress of your Job in the PrintClient window as well as see Job Details, manage your Job queue, change priorities, abort jobs, etc.